

taurus

RCC.TAU.MYCOOK

Code: 923000000

7LA



Taurus Household Appliances
After-Sales Service

Food Processor
Mycook





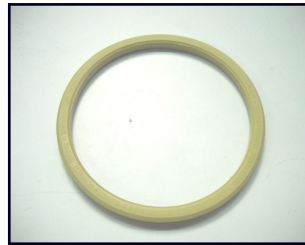
Exploded (1/3)



026062000



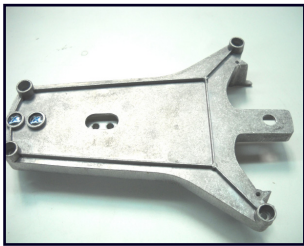
026065000



026069000



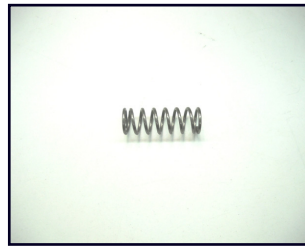
026401000



027005000



027009000



036081000



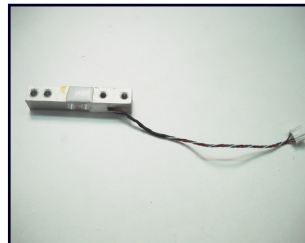
039296000



052108000



053006000



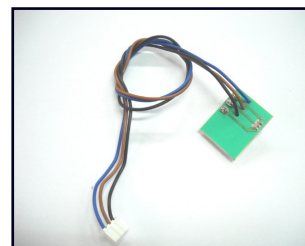
069209000



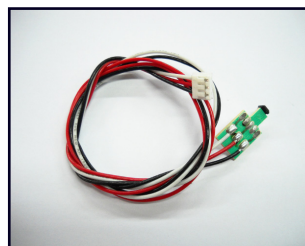
069210000



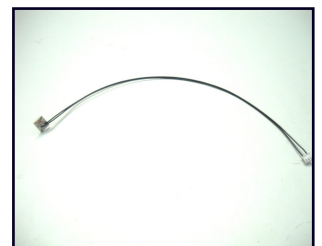
069212000



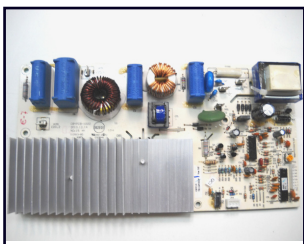
069326000



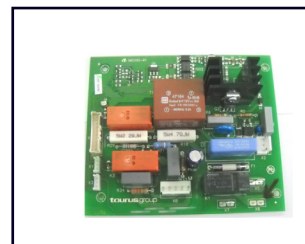
069327000



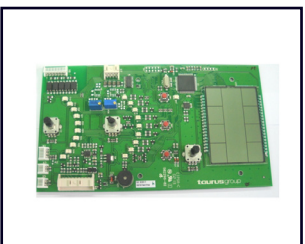
069328000



069329000



069362000



069363000



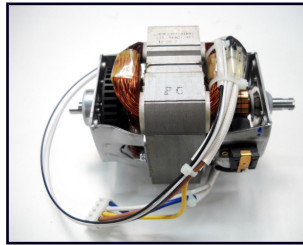
069347000



Exploded (2/3)



074208000



082203000



2211020000



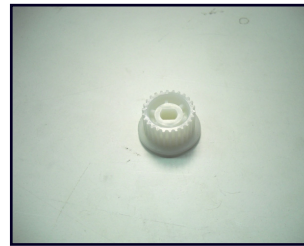
222420000



222421000



222424000



222425000



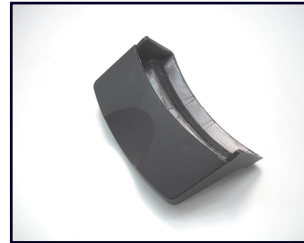
231910000



231911000



231912000



231917000



231929000



231930000



231944000



231983000



232106000



232107000



232108000



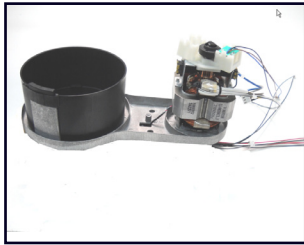
232109000



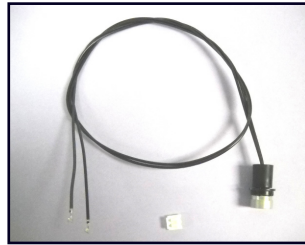
328301000



Exploded (3/3)



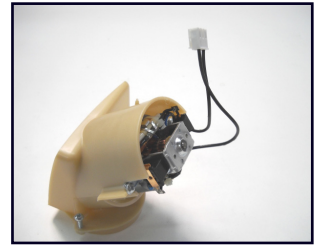
328314000



369215000



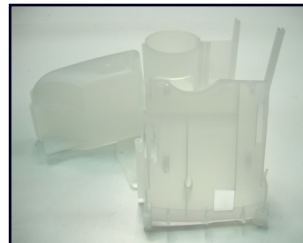
374760000



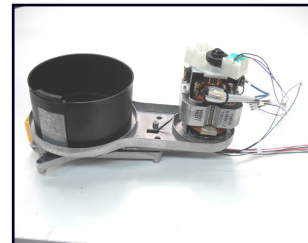
374770000



374773000



374781000



476279000



Codes (1/2)

CÓDIGO	DESCRIPCIÓN
026062000	MYCOOK BLADES SILICON SEALING RING
026065000	JAG LID SILICON SEALING RING (VER 2)
026069000	STEAM TRAY SILICONE GASKET
026401000	HID 3M 4867 TOOTHED BELT
027005000	MY COOK LOAD CELL SUPPORT
027009000	LOAD CELL TO SUPPORT ANCHORING
036081000	NTC STAINLESS STEEL SPRING
039296000	FOOD PROCESSOR MAINS CONNECTION
052108000	NTC JAR CONNECTOR
053006000	IMPACT COIL ASSEMBLY
069209000	LOAD CELL WITH CONNECTOR
069210000	PCI CONNECTOR PCI INDUCTION CONTROL
069212000	PCI CONNECTOR PCI POWER CONTROL
069326000	HALL PCI TACHOMETER WITH CONNECTOR
069327000	JAR HALL PCI WITH PRESENCE CONNECTOR
069328000	NTC COIL PCI
069329000	INDUCTION PCI
069362000	MYCOOK PCI SET STANDBY POWER (VER 2)
069363000	MYCOOK CONTROL SET STANDBY PCI (VER 2)
069347000	SWITCH WITH PROTECTIVE COVER
074208000	INDUCTION COIL ASSEMBLY
082203000	230V 50Hz UNIVERSAL MOTOR ASSEMBLY
221102000	MYCOOK SUPPORT DOWEL BLACK
222420000	MOTOR NTC TACHOMETER SUPPORT

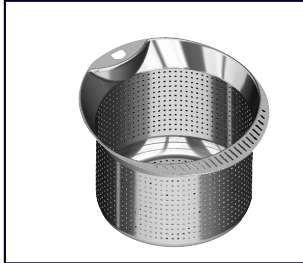


Codes (2/2)

CÓDIGO	DESCRIPCIÓN
222421000	FERRITE MULTI-POLE MOTOR SHAFT SUPPORT
222424000	HTD 3M TOOTHED WHEEL 60 TEETH
222425000	TOOTHED WHEEL 26 TEETH
231910000	MYCOOK HANDLE CONTROL
231911000	JAR LOWER HANDLE
231912000	JAR UPPER HANDLE
231917000	MY COOK METAL HANDLE TRAY
231929000	MY COOK PUSH-BUTTON
231930000	TEMPERATURE-SPEED SELECTOR CONTROL
231944000	MY COOK SCALE LOCKING STOP
231983000	BODY MYCOOK TAMP
232106000	JAR BLADES FIXING CLAMP (VER 2)
232107000	JAR BLADES SUPPORT (VER 2)
232108000	CHASSIS JAR COUPLER (VER 2)
232109000	BLADES SHAFT DRIVE PINION (VER 2)
328301000	CHASSIS WITH TOOTHED WHEEL AND BEARING
328314000	CHASSIS SET WITHOUT SCALE (VER 2)
369215000	JAR TEMPERATURE SENSOR
374760000	BASE ASSEMBLY
374770000	FAN MOTOR WITH TURBINE
374773000	SET COVER STICK
374781000	FAN AND CIRCUITS SUPPORT
476279000	MOTOR CHASSIS WITH TEMPERATURE SENSOR (VER 2)



Accessories



011535000



231913000



231914000



231916000



231919000



231922000



231923000



328309000



374755000



374823000



374789000



428129000



476271000



476274000



580095000



Codes Accessories (1/1)

CODE	DESCRIPTION
011535000	MYCOOK STEAM BASKET STRAINER
231913000	MYCOOK MEASURING CUP
231914000	MYCOOK JAR LID
231916000	MYCOOK PLASTIC STEAMER TRAY
231919000	MY COOK METAL TRAY LID
231922000	MY COOK MIXING BLADE
231923000	HANDLE SPATULA
328309000	METAL TRAY WITH HANDLES SET (VER 2)
374755000	MYCOOK BLADES ASSEMBLY
374823000	TOP PITCHER SET AFTER SALES (VER 2)
374789000	MONOBLOCK SPATULA ASSEMBLY.
428129000	MY COOK JAR+BOX+PACKING BAG+TRIM RING (no blades)
476271000	METAL TRAY (VER 2)
476274000	PITCHER SET WITH BLADES (VER 2)
580095000	SET PITCHER WITH LID (VER 2)



Problems and Remedies (1/3)

FAULT	DESCRIPTION	CAUSE	SOLUTION
ERROR 1	Jug NTC sensor not connected (X8)	Check that the Jug NTC connector is correctly connected to the CONTROL PCI	Connect correctly
		Jug NTC faulty	Change FRAME + INDUCT. + MOTOR SUPP. unit
ERROR 2	Motor NTC sensor not connected (X2)	Check that the motor NTC connector is correctly connected to the CONTROL PCI	Connect correctly
		Motor NTC faulty	Change FRAME + INDUCT. + MOTOR SUPP. unit
ERROR 3	Tachometer fault (X3)	Check that the tachometer is correctly connected to the CONTROL PCI	Connect correctly
		Check tachometer signal	Change tachometer
		Check correct location of multi-pole ferrite assembly in motor	Fit correctly
		Check that the main motor is correctly connected to the CONTROL PCI	Connect correctly
		Main motor faulty	Change FRAME + INDUCT. + MOTOR SUPP. unit
ERROR 4	Motor overcurrent	"Motor power current over limit"	Decrease amount of ingredients in Jug
	If this happens when the lid is removed or when the motor is running	POWER PCI short-circuit	Change POWER PCI
ERROR 5	Motor overheating	Motor temperature over limit	Allow motor to cool
ERROR 6	Induction not activated	Check Induction PCI supply	Connect power
		Check that the INDUCTION PCI is correctly connected to the CONTROL PCI	Connect correctly
		Check polarity of the Induction loop OUT1 and OUT2 on INDUCTION PCI	Connect correctly
		Check INDUCTION PCI power	Adjust INDUCTION PCI power



Problems and Remedies (2/3)

FAULT	DESCRIPTION	CAUSE	SOLUTION
ERROR 7	Induction PCI error	Check Induction PCI supply	Connect power
		Check polarity of the Induction loop OUT1 and OUT2 on INDUCTION PCI	Connect correctly
		Check that the INDUCTION PCI is correctly connected to the CONTROL PCI	Connect correctly
		Check that the loop NTC is connected to the Induction PCI	Connect correctly
		Loop NTC faulty	Change FRAME + INDUCT. + MOTOR SUPP. unit
		PCI faulty	Change INDUCTION PCI
ERROR 8	Induction plate IGBT overheating	INDUCTION PCI temperature over limit	Do not select temperature operation. Allow to cool
ERROR 9	Induction plate loop overheating	Loop NTC temperature over limit	Do not select temperature operation. Allow to cool
ERROR 11	Incorrect Jug lid detection sensor signal	Check that the lid is correctly fitted on the jug	Fit the lid correctly
		Check that the magnets are correctly fitted on the jug	Fit the magnets correctly
		Check that the jug hall sensor connectors are correctly connected to the CONTROL PCI	Fit connector correctly
		Jug hall sensor PCI broken	Change FRAME + INDUCT. + MOTOR SUPP. unit
APPLIANCE DOES NOT SWITCH ON	Display icons not enabled	Check MAINS CONNECTION	Change MAINS CONNECTION
		Check correct power cable - SWITCH connection	Connect correctly
		Check switch	Replace switch
		Check correct power cable connection to POWER PCI	Connect correctly
		Check correct CONTROL PCI - POWER PCI connection	Connect correctly
		Check POWER PCI fuses	Replace POWER PCI fuses



Problems and Remedies (3/3)

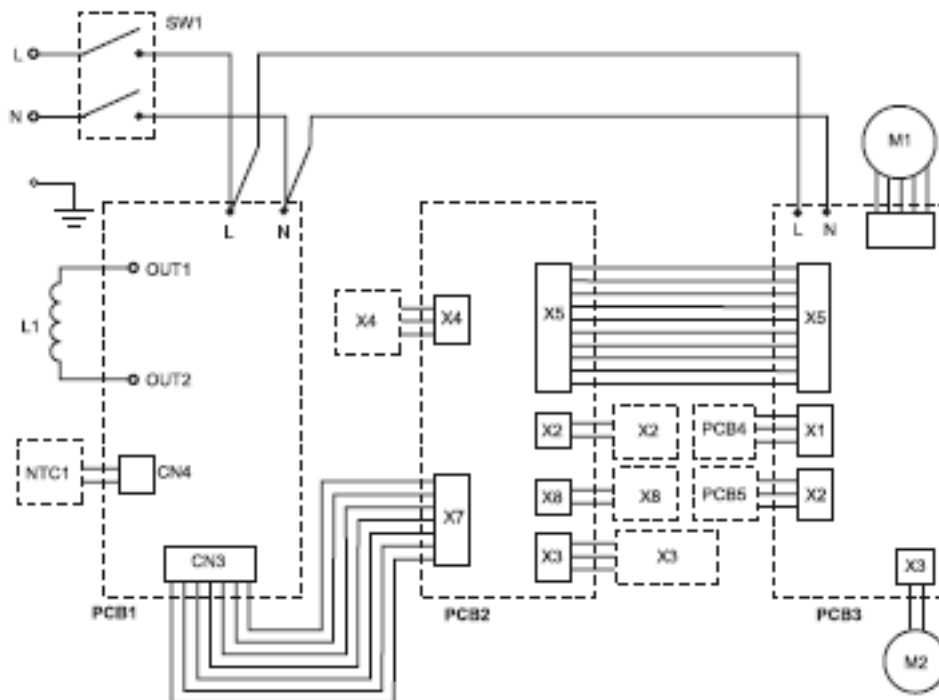
FAULT	DESCRIPTION	CAUSE	SOLUTION
"SCALES DO NOT WEIGH CORRECTLY"		Scales not gauged	Gauge scales correctly
		Display correct position of FRAME + INDUCT. + MOTOR SUPP. unit	Fit correctly
		Check that the X4 load cell is correctly connected to CONTROL PCI	Connect correctly
		Load cell faulty	Change FRAME + INDUCT. + MOTOR SUPP. unit
MOTOR SPEED BADLY ADJUSTED	The motor speed does not match the speed selected	Check that the tachometer is correctly connected to the CONTROL PCI	Connect correctly
		Check tachometer signal	Change tachometer
		Check correct location of multi-pole ferrite assembly in motor	Fit correctly
		CONTROL PCI faulty	Change CONTROL PCI



Technical Specifications

Model	MYCOOK
Typ	MY-COOK - 1.600 W
Voltage	220 - 230 V, 50 /60 Hz
Power	1.600 W

Wiring Diagram



DESCRIPTION		DESCRIPTION	
L1	Induction loop	PCB4, 5	Hall sensor PCI
M1	Main motor	SW1	Two-pole switch
M2	Fan motor	X2	Motor NTC
NTC1	Loop NTC	X3	Tachometer PCI
PCB1	Induction PCI	X4	Load cell
PCB2	Control PCI	X8	Jug NTC
PCB3	Power PCI		